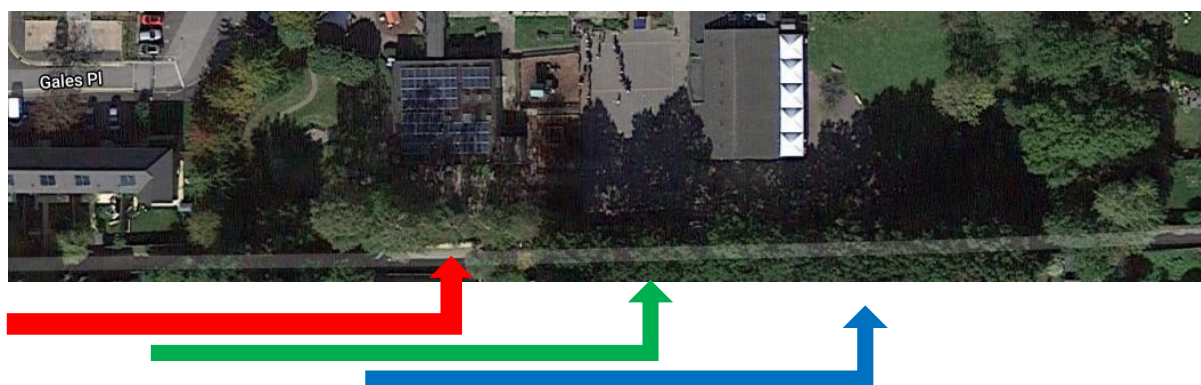


Information for Lower Site parents and carers



Start and end of the day:

Nursery and Reception – instructions for parents

Nursery children to use the main school gate for drop off and collection.

Reception children must use the reception gate for drop off and collection.

Arrival: 8.40—8.55am

Pick up: 2.55pm

Year 1

Year 1 children must use the double gate for drop off and pick up. Parents can access the Year 1 area when dropping off and picking up.

Arrival: 8.40—8.55am

Pick up: 2.55pm

Year 2

Year 2 children must use the main school gate for drop off and pick up. Parents can access the Year 2 area when dropping off and picking up.

Arrival: 8.40—8.55am

Pick up: 3.00pm

Year	Arrival	Departure
Nursery	8.40 – 11.40 am	12.30 – 3.30 pm
Reception	8.40 am – 8.55 am	2.55 pm
Year 1	8.40 am – 8.55 am	2.55 pm
Year 2	8.40 am – 8.55 am	3.00 pm